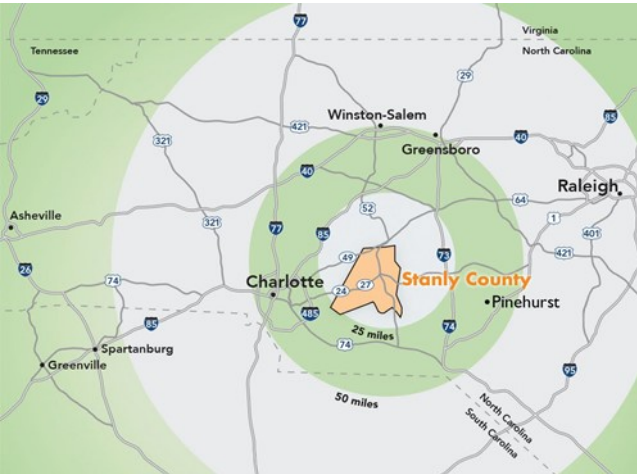
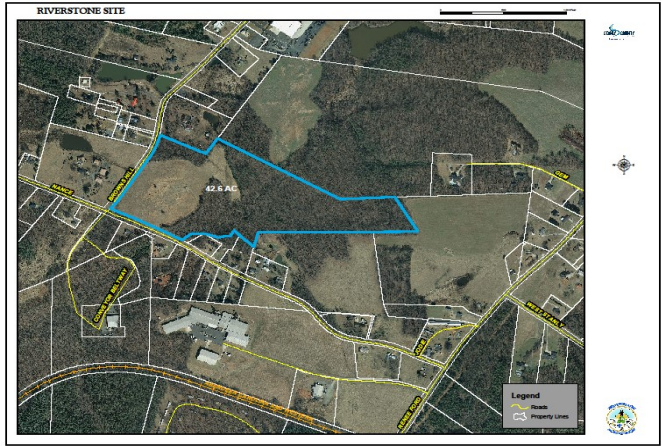


*Water. Air. Land. Innovation.*

# Riverstone Industrial Site



## Nance Road Stanfield, NC 28163

### Infrastructure

- Electricity:  
Customer Choice: Duke Energy or Union Power
- Water & Sewer:  
Stanly County
- Natural Gas:  
Piedmont Natural Gas
- Telecommunications:  
AT&T

### Property Details

- 42 acres
- \$19,200 per acre
- Zoned light industrial
- 4 Lane 24/27 connects to I-485
- 12 minutes to I-485, Charlotte Outer Loop
- 44 minutes from Charlotte Douglas International Airport
- 25 minutes from Stanly County Airport
- Can be subdivided
- County owned property
- Located in an industrial setting
- Aggressive local incentives
- Air Attainment site
- Foreign Trade Zone #57

Contact: Candice Boyd Moffitt  
Director  
Stanly County EDC  
704-986-3682 (office)  
704-239-0951 (mobile)  
cmoffitt@stanlyedc.com  
www.stanlyedc.com