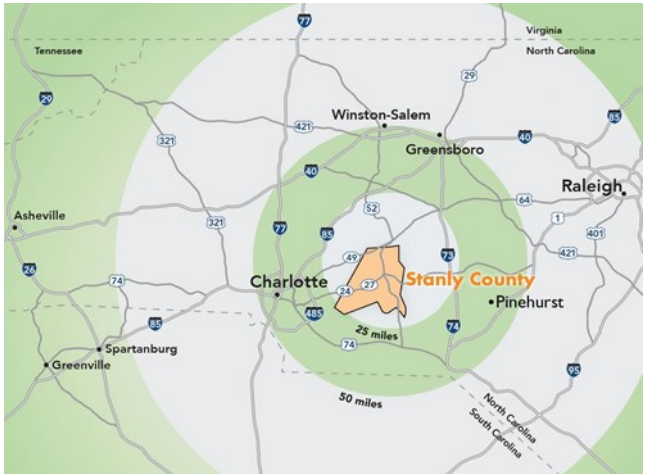
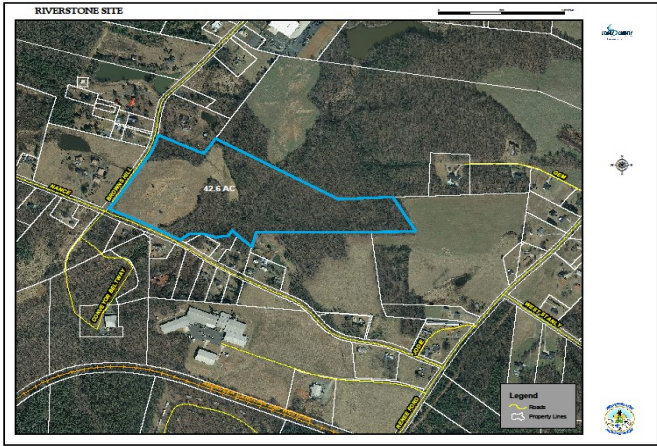


Water. Air. Land. Innovation.

Riverstone



Nance Road Stanfield, NC 28163

Infrastructure

- Electricity:
 Customer Choice: Duke Energy or Union Power
- Water & Sewer:
 Stanly County
- Natural Gas:
 Piedmont Natural Gas
- Telecommunications:
 AT&T

Property Details

- 42 acres
- \$19,200 per acre
- Zoned light industrial
- 4 Lane 24/27 connects to I-485
- 12 miles to I-485
- 44 minutes from Charlotte Douglas International Airport
- 25 minutes from Stanly County Airport
- Can be subdivided
- County owned property
- Located in an industrial setting
- Aggressive local incentives
- Air Attainment site
- Foreign Trade Zone #57

Contact: Candice Boyd Lowder
 Director
 Stanly County EDC
 704-986-3682 (office)
 704-239-0951 (mobile)
 clowder@stanlyedc.com
 www.stanlyedc.com