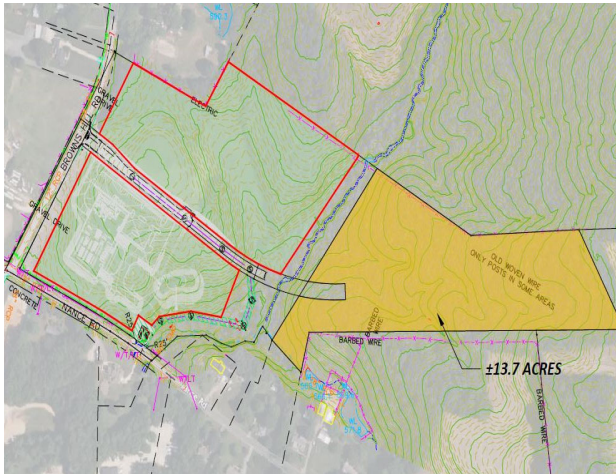
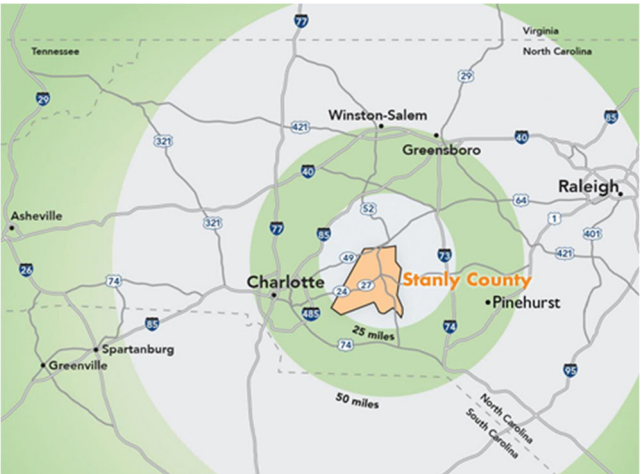


Water. Air. Land. Innovation.



Riverstone



Riverstone Dr, Stanfield, NC 28163

Infrastructure

- Electricity:
Customer Choice: Duke Energy or Union Power
- Water & Sewer:
Stanly County
- Natural Gas:
Piedmont Natural Gas
- Telecommunications:
AT&T

Property Details

- +/- 13 acres
- Zoned light industrial
- 4 Lane 24/27 connects to I-485
- 12 minutes to I-485, Charlotte Outer Loop
- 44 minutes from Charlotte Douglas International Airport
- 25 minutes from Stanly County Airport
- Can be subdivided
- County owned property
- Located in an industrial setting
- Can be subdivided
- Aggressive local incentives
- Air Attainment site
- Foreign Trade Zone #57

Contact:	Candice Boyd Lowder Director Stanly County EDC 704-986-3682 (office) 704-239-0951 (mobile) clowder@stanlyedc.com www.stanlyedc.com
----------	--