



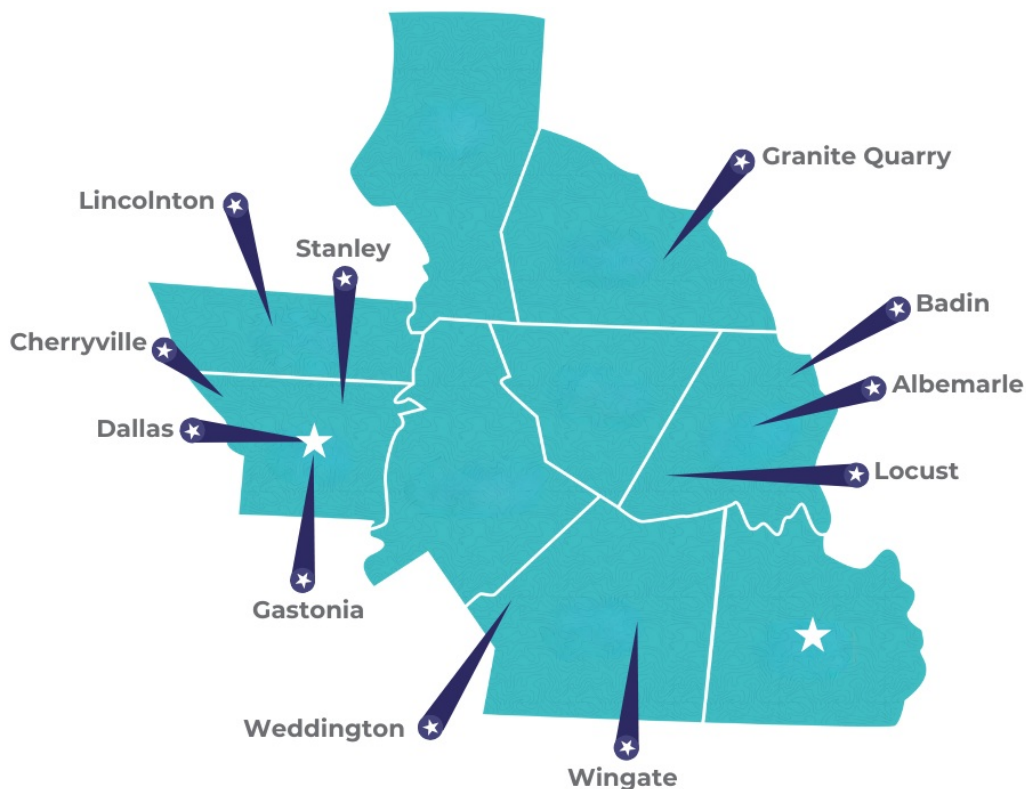
CENTRALINA

REGIONAL COUNCIL

THE CENTRAL LINES *Local Government Edition*

This month, we're dedicating our newsletter to the local governments that work tirelessly to **help our region thrive**. Below, you'll see the many ways that we're currently assisting local governments and will find **inspiration for the ways that we can assist you**.

In This Issue



While we're always hard at work in **communities across our nine-county region**, the municipalities and counties mentioned in this issue are reflected in the map above. Keep reading to learn how we've partnered with each of them.

UPCOMING EVENTS

November 13

[Centralina Executive Board Meeting](#)

November 20

[Centralina Learns: Bridging Childcare and Business](#)

November 20

FEMA Public Assistance Information Session

December 3

Centralina Learns: Developing AI Policies

All Events

ASSESSMENT CENTERS



Photo courtesy of Visit Rowan County

A Rock-Solid Hire in Granite Quarry

Earlier this year, Granite Quarry was in search of a new Town Manager. Town Managers are difficult positions to fill as the skills needed to oversee day-to-day operations and strategic planning require exceptional experience and expertise.

Here's How We Helped

Selecting the best candidate to hire or promote is an important decision for local governments, particularly in leadership positions that are **responsible for shaping the direction of the organization**.

Assessment centers can be used to create a more complete picture of individuals. Applicants' ability to **drive for results, influence others and tolerate stress** are evaluated alongside traditional skills.

Most recently, we've helped **Gastonia, Granite Quarry and Lincolnton** conduct assessment centers to find the best fit for their organizations.

Click the button below to learn more.

Find Your Best Fit

CODE ENFORCEMENT

Complaints & Compliance: Big Support for Small Towns

In 2023, we published an article about [our work in Weddington](#) where limited staff made code enforcement a challenge. Many local governments face this same problem, and Centralina is here to provide support. Join the ranks of **Weddington, Badin, Cherryville and more** to better preserve your community's quality of life.



Code enforcement supports housing preservation by ensuring that properties meet minimum standards for safety, health and aesthetics. These services **protect property values, preserve community character and are vital to improving and preserving quality of life** for residents and businesses.

Our staff can provide local governments with customized, on-call code enforcement services. Depending on your unique needs, our staff will perform such duties as **reviewing ordinances** for alignment with industry standards, **investigating substandard building complaints** and **notifying property owners**.

Click the button below to learn more.

[Maintain Your Standards](#)

LAND USE PLANNING



Take a Look Ahead

Since 2019, state legislation has required that municipalities hoping to enforce zoning regulations have and maintain a land use plan. **Land use plans capture the vision, values and goals of a community** in order to create a strategic direction that guides planning decisions. Lately, we've worked with **Dallas, Stanley, Wingate, Albemarle and Locust** to set their teams up for success.

Land use planning provides communities with an opportunity to **integrate land use practice with other local priorities** such as transportation connectivity, parks and recreation, infrastructure investment and economic development. Coordinated planning helps communities create vibrant places that **meet the needs of current and future residents**.

Centralina has the experience necessary to support local governments with land use planning efforts and can assist with the **creation or updates of land use, small area and corridor plans**. Our experts

provide technical assistance to your community on diverse aspects of the planning process that lead to a winning plan.

Click the button below to learn more.

Your Future Starts Today

STRATEGIC PLANNING



Stay Two Steps Ahead

From 2020 to 2022, we supported the City of Albemarle in **developing a three-year strategic plan**. Many local governments have taken the same step as their communities grow and needs change. In addition to Albemarle, **Anson County and Gaston County** have called on Centralina for assistance in navigating the process.

Strategic planning is necessary for any organization's success, but going through the process can be daunting and demanding for local government staff. As part of Centralina's **meeting facilitation services**, we offer help with strategic planning that will **reenergize your staff and encourage productive discussions** to ensure your goals are met.

Retreat Season is Just Around the Corner!

Centralina staff serve our member communities by **designing and facilitating effective meetings** for a range of group sizes, subject matter and formats. We work closely with clients to **define specific meeting objectives, develop a customized, outcome-oriented agenda and design interactive activities** to engage participants and meet desired objectives. Whether it's a one-time event or a series of public engagement activities, we work with you to find the **right approach to get results**. This retreat season, take advantage of these services for:

**Budget Retreats
& Workshops**



**Leadership
Development**



**Public
Engagement**



**Strategic
Planning**



Click the button below to learn more.

Let's Get to Work

TODAY'S HEADLINES

Evaluating the Potential of Brownfields

In October 2024, [Centralina](#) received a [grant](#) from the Environmental Protection Agency to be put toward **brownfield revitalization projects across the region**.

In order to prepare local governments for the distribution of grant funds, Centralina partnered with New Jersey Institute of Technology's Technical Assistance to Brownfield Communities Program to host a day-long Regional Brownfields Summit. Representatives from throughout our nine-county region were in attendance and received information on **brownfield basics, available grant programs and how to take advantage of Centralina** when evaluating brownfields.

Attendees even had the opportunity to present their brownfield challenges to a panel of experts for live workshopping.

If your community has a brownfield site just **waiting to be transformed** into a valuable community asset, [contact us today](#) or [submit an interest form](#).



[About the Brownfields Program](#)

Developing Winning Transportation Grant Applications

Centralina's [Integrated Mobility Center](#) hosted a Centralina Learns webinar on October 24 to provide tips on seeking federal transportation funding as a local government.

Attendees heard from Gretchen Belk (NCDOT), Allison Anolik (McAdams consulting) and Jennifer Stafford (CRTPO). These speakers shed light on application requirements and strategies as well as what to do when a grant has been awarded.

Members can review the webinar by visiting our [member portal](#). Questions can be directed [Regional Mobility Program Manager Andy Grzymiski](#).

Grant Application Components

Forms/Project Information

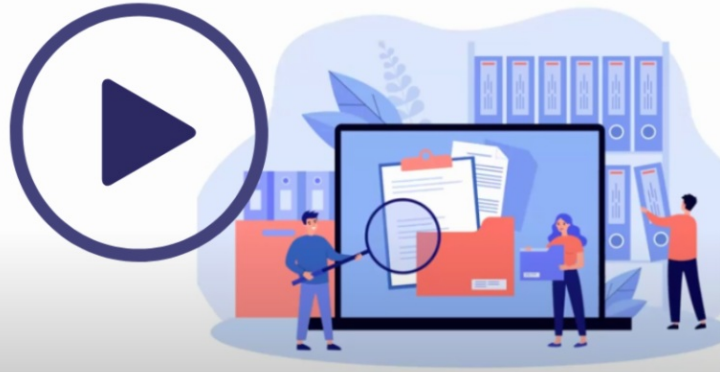
Narrative Elements

- Project Description
- Project Location
- Project Budget
- Evaluation Criteria
- Readiness and Risk

Benefit Cost Analysis

Attachments

- Letters of Support
- Appendices / Supporting Documents



[Member Portal](#)

RAISE Grant Applications Open Now!

Now that you know **how to write a winning federal transportation grant**, put your skills to the test by applying for the [Rebuilding American Infrastructure with Sustainability and Equity \(RAISE\) grant](#). This program provides grants for **surface transportation infrastructure projects** that will have a significant local or regional impact.

From USDOT:

"As of June 2024, the program has **awarded more than \$15 billion** over sixteen rounds to local governments, Tribes, transit and port authorities, states, and other entities for capital and planning projects that will improve safety, environmental sustainability, quality of life, mobility and community connectivity, economic competitiveness, state of good repair, partnership and collaboration, and innovation."

Applications accepted through January 30, 2025.

[Learn More & Apply](#)

State Resiliency Grants Request Letters of Interest

The NC Department of Public Safety (NCDPS) is requesting letters of interest (LOI) from communities interested in receiving funds through the **Building Resilient Infrastructure and Communities (BRIC)** and the **Flood Mitigation Assistance (FMA)** grant programs. The LOI deadline for BRIC has been extended to December 20, 2024. Projects eligible for BRIC funding include **shovel-ready or phased infrastructure projects and capability and capacity-building (C&CB) activities**. C&CB activities must result in a resource, strategy or tangible mitigation product that will reduce or eliminate

risk and damage from future natural hazards, increase resiliency and promote a culture of preparedness.

The LOI deadline for FMA is due December 1, 2024. Projects eligible for FMA funding include those that **aim to reduce or eliminate the risk of repetitive flood damage to buildings and structures** insured under the National Flood Insurance Program. Funds can be used for C&CB activities, cost-effective localized flood risk reduction projects and individual flood mitigation projects.

Additional information about both funding opportunities can be found [here](#), and an NCDPS webinar on LOI may be accessed [here](#).



[Submit Your LOI](#)

IN OTHER NEWS

Expand Your Local Knowledge: 2025 CLT Aviation Academy Application Deadline EXTENDED!

Each year, the CLT Aviation Academy provides a one-of-a-kind opportunity to explore the inner workings of Charlotte Douglas International Airport (CLT). Through a series of eight weekly sessions, participants learn about all aspects of the airport through subject matter presentations, interactive demonstrations and tours of the airport's secure areas.

Local government staff and elected officials have found the Aviation Academy to be an **enriching professional development experience**. If you are interested in learning more about CLT's relationship to regional growth and its impact on our **local economy, transportation systems and overall community**, we encourage you to apply for the 2025 Academy by Friday, November 15th. To learn more, view this [short video](#) about the Academy or check out the [schedule and syllabus](#).

[Soar to New Heights - Apply Today](#)



ARPA/SLFRF Obligation Deadline Notice

The deadline for local governments to obligate funds received through the American Rescue Plan Act (ARPA or SLFRF if State and Local Fiscal Recovery Funds) is **December 31, 2024**. Local governments may not have completely spent their allotment; however, all units of government must obligate their entire allotment by the deadline through their grant project ordinance (GPO).

If your unit has not fully obligated all funds by having projects approved by the governing body, please make plans to have the GPO on the agenda as early as possible for approval prior to 12/31/2024. You will have until December 31, 2026, to complete projects and fully expend funding. Local governments may also want to review all ARPA/SLFRF records, policies and reports for completeness (keeping these until 12/31/2031). If you need assistance with spending plans or have questions regarding your ARPA/SLFRF program, reach out to Lenessa Hawkins at lhawkins@centralina.org.

[Capitol Corner - Election Highlights](#)

[View Centralina Job Opportunities](#)

[Access the Member Portal](#)





Centralina Regional Council | 10735 David Taylor Drive Suite 250 | Charlotte, NC 28262 US

[Unsubscribe](#) | [Update Profile](#) | [Constant Contact Data Notice](#)



Try email marketing for free today!